

**Doppelsteg Breitband Hornantenne**  
*Double Ridge Broadband Horn*



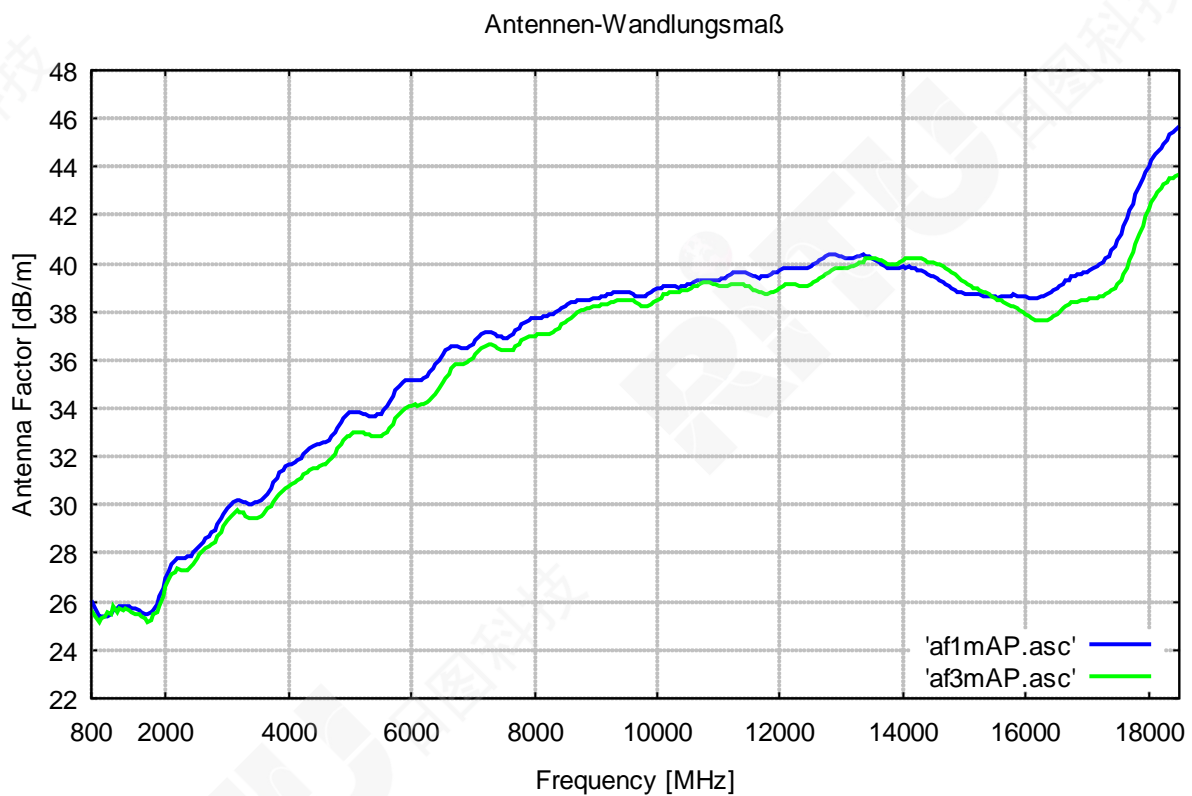
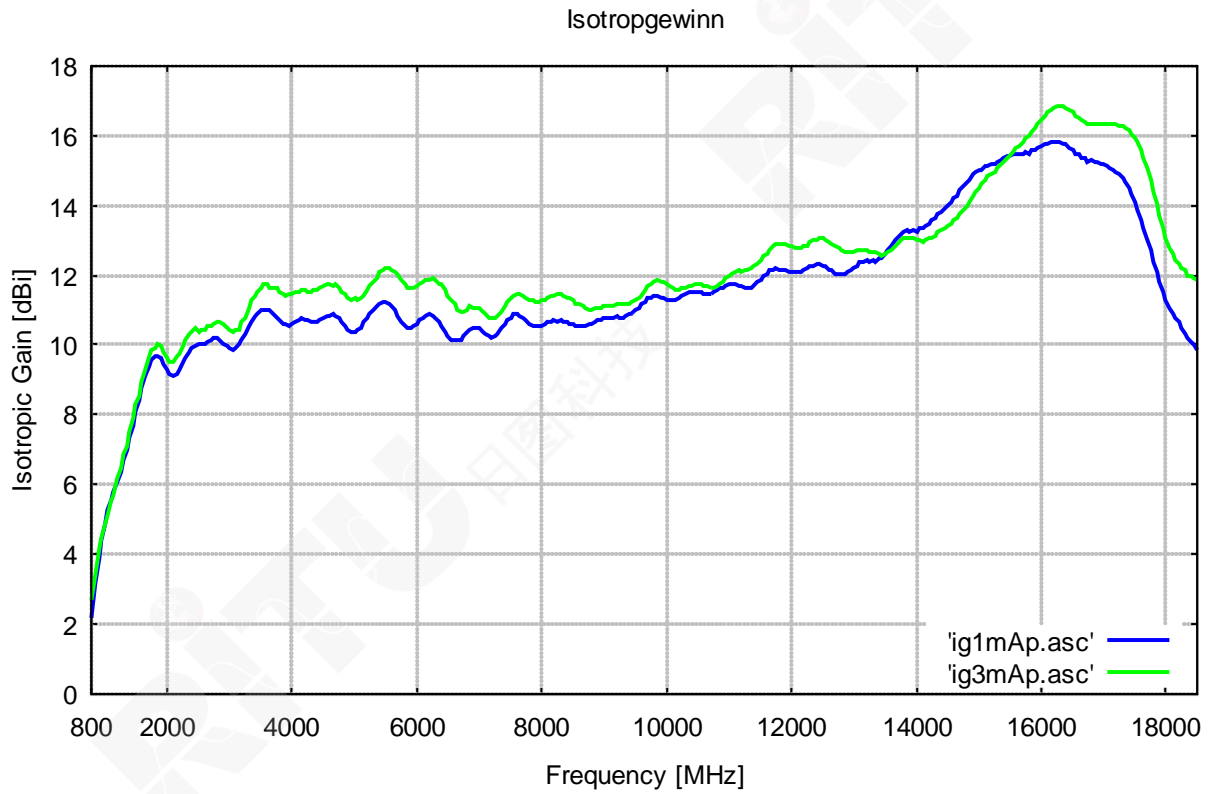
**Beschreibung:**

Linear polarisierte Doppelsteg Breitband Hornantenne in Aluminiumausführung für Empfangs- und Sendeanwendungen.

**Description:**

Linear polarized Double Ridge Broadband Horn Antenna (Aluminium) for Receive and Transmit Applications.

<b>Technische Daten:</b>		<b>Specifications:</b>
Frequenzbereich, nominell:	1 GHz...18 GHz	Nominal Frequency Range:
Nutzbarer Frequenzbereich:	800 MHz ... 18 GHz	Usable Frequency Range:
Isotropiegewinn:	5 ... 17 dBi	Isotropic Gain:
Antennenfaktor:	25 ... 44 dB/m	Antenna Factor:
Impedanz, nominell:	50 Ω	Nominal Impedance:
Stehwellenverhältnis SWR typisch:	≈1.5	Standing Wave Ratio SWR typical:
Vor- Rückverhältnis:	> 25 dB (f > 1.3 GHz)	Front to Back Ratio:
Polarisationsentkopplung:	> 25 dB (1 GHz...18 GHz)	Cross Polarisation:
3 dB Öffnungswinkel typ.(E-Ebene):	90°-8°	3 dB Beamwidth typ. (E-Plane):
3 dB Öffnungswinkel typ.(H-Ebene):	60°-7°	3 dB Beamwidth typ. (H-Plane):
Max. Eingangsleistung:	see diagram siehe Diagramm	Max. Input Power:
Anschlußart: N-Buchse		N-Connector female
Halterung: 22 mm Rohr, Rastring		Mount: 22 mm Tube, Indexing Ring
Breite x Länge x Dicke:	250 x 195 (408) x 142 mm	Width x Length x Thickness:
Gewicht:	1.4 kg	Weight:



Frequency	Gain(Isotr.) 1 m Ap.	Ant.-Factor 1 m Ap.	Gain(Isotr.) 3 m Ap.	Ant.-Factor 3 m Ap.	Gain(Isotr.) farfield	Ant.-Factor farfield
MHz	dBi	dB/m	dBi	dB/m	dBi	dB/m
800.00	2.19	26.09	2.68	25.61	1.85	26.43
850.00	3.12	25.69	3.40	25.41	2.66	26.15
900.00	3.89	25.42	4.18	25.13	3.68	25.63
950.00	4.40	25.37	4.48	25.29	4.42	25.35
1000.00	4.87	25.35	4.85	25.37	4.48	25.74
1050.00	5.25	25.40	5.09	25.55	4.91	25.73
1100.00	5.54	25.51	5.56	25.48	5.41	25.64
1150.00	5.79	25.65	5.66	25.77	5.67	25.77
1200.00	6.09	25.71	6.21	25.59	6.21	25.59
1250.00	6.35	25.80	6.46	25.69	6.51	25.65
1300.00	6.69	25.81	6.88	25.62	6.87	25.63
1350.00	6.99	25.84	7.09	25.74	7.32	25.51
1400.00	7.32	25.82	7.52	25.62	7.64	25.50
1450.00	7.70	25.75	7.92	25.53	7.94	25.51
1500.00	8.06	25.68	8.29	25.45	8.53	25.21
1550.00	8.42	25.60	8.56	25.47	8.78	25.24
1600.00	8.78	25.52	8.95	25.35	9.17	25.13
1650.00	9.09	25.48	9.30	25.27	9.42	25.15
1700.00	9.37	25.46	9.67	25.16	9.76	25.07
1750.00	9.55	25.53	9.83	25.25	10.03	25.05
1800.00	9.66	25.67	9.90	25.43	10.21	25.12
1850.00	9.69	25.87	10.03	25.53	10.14	25.42
1900.00	9.61	26.19	9.96	25.83	10.14	25.65
1950.00	9.46	26.56	9.79	26.24	9.91	26.11
2000.00	9.30	26.94	9.60	26.64	10.00	26.24
2050.00	9.16	27.30	9.50	26.95	9.90	26.56
2100.00	9.13	27.54	9.50	27.16	9.77	26.90
2150.00	9.19	27.68	9.66	27.21	9.77	27.10
2200.00	9.29	27.78	9.73	27.34	9.91	27.16
2250.00	9.49	27.78	9.98	27.29	10.06	27.20
2300.00	9.65	27.80	10.15	27.31	10.37	27.09
2350.00	9.81	27.84	10.32	27.32	10.34	27.30
2400.00	9.91	27.91	10.38	27.44	10.45	27.37
2450.00	9.96	28.04	10.46	27.54	10.48	27.52
2500.00	10.00	28.18	10.40	27.78	10.55	27.63
2550.00	10.04	28.31	10.41	27.94	10.51	27.85
2600.00	10.03	28.49	10.42	28.10	10.59	27.92
2650.00	10.09	28.60	10.52	28.17	10.58	28.11
2700.00	10.12	28.73	10.56	28.29	10.63	28.22
2750.00	10.18	28.83	10.62	28.39	10.62	28.39
2800.00	10.19	28.98	10.68	28.48	10.68	28.48
2850.00	10.12	29.19	10.63	28.68	10.70	28.62
2900.00	10.05	29.42	10.62	28.84	10.83	28.64
2950.00	9.97	29.64	10.51	29.11	10.64	28.97
3000.00	9.90	29.86	10.41	29.35	10.58	29.18
3050.00	9.88	30.03	10.35	29.56	10.50	29.40
3100.00	9.92	30.13	10.44	29.60	10.67	29.37
3150.00	10.00	30.18	10.45	29.74	10.79	29.40
3200.00	10.14	30.18	10.65	29.68	10.91	29.42
3250.00	10.33	30.13	10.80	29.66	10.99	29.47
3300.00	10.52	30.07	11.08	29.51	11.18	29.41
3350.00	10.68	30.04	11.28	29.44	11.33	29.39
3400.00	10.84	30.01	11.42	29.43	11.54	29.31



Frequency	Gain(Isotr.) 1 m Ap.	Ant.-Factor 1 m Ap.	Gain(Isotr.) 3 m Ap.	Ant.-Factor 3 m Ap.	Gain(Isotr.) farfield	Ant.-Factor farfield
MHz	dBi	dB/m	dBi	dB/m	dBi	dB/m
3450.00	10.91	30.07	11.51	29.47	11.60	29.38
3500.00	11.00	30.10	11.65	29.45	11.63	29.47
3550.00	11.03	30.19	11.72	29.50	11.66	29.56
3600.00	11.03	30.31	11.74	29.61	11.58	29.77
3650.00	10.99	30.48	11.65	29.82	11.66	29.80
3700.00	10.89	30.69	11.63	29.95	11.61	29.97
3750.00	10.78	30.92	11.62	30.08	11.53	30.17
3800.00	10.69	31.12	11.49	30.33	11.44	30.37
3850.00	10.61	31.32	11.44	30.48	11.41	30.52
3900.00	10.58	31.47	11.43	30.61	11.42	30.62
3950.00	10.57	31.59	11.45	30.71	11.52	30.64
4000.00	10.62	31.64	11.46	30.80	11.59	30.67
4050.00	10.68	31.68	11.51	30.86	11.66	30.71
4100.00	10.74	31.74	11.54	30.93	11.79	30.69
4150.00	10.75	31.83	11.60	30.98	11.81	30.77
4200.00	10.73	31.96	11.59	31.10	11.78	30.90
4250.00	10.71	32.08	11.54	31.25	11.74	31.05
4300.00	10.67	32.22	11.53	31.36	11.76	31.13
4350.00	10.64	32.35	11.56	31.43	11.71	31.28
4400.00	10.67	32.42	11.58	31.51	11.75	31.34
4450.00	10.70	32.49	11.65	31.54	11.70	31.48
4500.00	10.76	32.52	11.69	31.59	11.72	31.57
4550.00	10.83	32.55	11.72	31.66	11.79	31.59
4600.00	10.84	32.63	11.76	31.71	11.83	31.64
4650.00	10.87	32.70	11.71	31.86	11.82	31.75
4700.00	10.83	32.83	11.72	31.94	11.75	31.91
4750.00	10.76	33.00	11.64	32.11	11.65	32.10
4800.00	10.66	33.19	11.53	32.32	11.66	32.19
4850.00	10.55	33.39	11.44	32.49	11.61	32.32
4900.00	10.45	33.57	11.37	32.66	11.53	32.49
4950.00	10.40	33.71	11.30	32.81	11.47	32.64
5000.00	10.40	33.80	11.32	32.88	11.39	32.81
5050.00	10.44	33.85	11.29	33.00	11.38	32.91
5100.00	10.51	33.86	11.33	33.04	11.44	32.93
5150.00	10.63	33.83	11.41	33.04	11.52	32.94
5200.00	10.76	33.78	11.55	32.99	11.67	32.87
5250.00	10.88	33.74	11.67	32.95	11.75	32.88
5300.00	11.01	33.69	11.82	32.89	11.89	32.81
5350.00	11.09	33.69	11.94	32.84	12.01	32.78
5400.00	11.18	33.69	12.07	32.80	12.15	32.72
5450.00	11.23	33.72	12.15	32.80	12.29	32.66
5500.00	11.24	33.79	12.21	32.81	12.31	32.71
5550.00	11.19	33.91	12.19	32.91	12.25	32.85
5600.00	11.12	34.07	12.16	33.02	12.26	32.92
5650.00	10.99	34.27	12.11	33.15	12.21	33.05
5700.00	10.83	34.50	12.01	33.32	12.19	33.15
5750.00	10.67	34.74	11.85	33.56	12.05	33.36
5800.00	10.56	34.93	11.74	33.75	11.88	33.60
5850.00	10.48	35.08	11.66	33.90	11.81	33.75
5900.00	10.49	35.15	11.62	34.02	11.80	33.84
5950.00	10.53	35.18	11.64	34.07	11.79	33.92
6000.00	10.62	35.16	11.69	34.09	11.86	33.92
6050.00	10.70	35.15	11.72	34.13	11.90	33.96
6100.00	10.80	35.12	11.80	34.12	11.95	33.98

Frequency	Gain(Isotr.) 1 m Ap.	Ant.-Factor 1 m Ap.	Gain(Isotr.) 3 m Ap.	Ant.-Factor 3 m Ap.	Gain(Isotr.) farfield	Ant.-Factor farfield
MHz	dBi	dB/m	dBi	dB/m	dBi	dB/m
6150.00	10.84	35.16	11.87	34.13	11.99	34.00
6200.00	10.86	35.21	11.87	34.20	11.95	34.12
6250.00	10.82	35.32	11.90	34.24	11.99	34.15
6300.00	10.75	35.46	11.86	34.35	12.01	34.20
6350.00	10.65	35.62	11.77	34.50	11.87	34.40
6400.00	10.54	35.80	11.72	34.62	11.79	34.56
6450.00	10.40	36.01	11.58	34.83	11.65	34.77
6500.00	10.27	36.21	11.40	35.08	11.53	34.95
6550.00	10.17	36.38	11.29	35.25	11.46	35.08
6600.00	10.13	36.48	11.17	35.44	11.32	35.29
6650.00	10.12	36.56	11.03	35.65	11.25	35.43
6700.00	10.16	36.58	10.97	35.78	11.14	35.60
6750.00	10.26	36.54	10.96	35.84	11.05	35.76
6800.00	10.35	36.52	11.03	35.84	11.17	35.70
6850.00	10.44	36.49	11.10	35.83	11.28	35.66
6900.00	10.48	36.52	11.08	35.92	11.32	35.67
6950.00	10.48	36.58	11.06	36.00	11.28	35.78
7000.00	10.46	36.66	11.04	36.08	11.15	35.97
7050.00	10.39	36.80	10.97	36.21	11.16	36.02
7100.00	10.30	36.95	10.86	36.38	11.16	36.08
7150.00	10.25	37.06	10.80	36.51	11.02	36.29
7200.00	10.22	37.15	10.76	36.60	10.89	36.48
7250.00	10.26	37.16	10.77	36.65	10.82	36.61
7300.00	10.33	37.15	10.81	36.68	10.88	36.60
7350.00	10.46	37.08	10.95	36.59	11.03	36.52
7400.00	10.58	37.02	11.11	36.49	11.20	36.41
7450.00	10.72	36.94	11.24	36.43	11.31	36.35
7500.00	10.80	36.92	11.32	36.40	11.43	36.29
7550.00	10.87	36.91	11.39	36.39	11.52	36.26
7600.00	10.86	36.98	11.44	36.39	11.54	36.29
7650.00	10.83	37.06	11.46	36.44	11.54	36.35
7700.00	10.75	37.20	11.40	36.55	11.57	36.38
7750.00	10.69	37.31	11.32	36.69	11.48	36.53
7800.00	10.61	37.45	11.28	36.78	11.36	36.70
7850.00	10.57	37.55	11.26	36.86	11.28	36.83
7900.00	10.54	37.63	11.23	36.94	11.29	36.89
7950.00	10.54	37.69	11.23	37.00	11.39	36.84
8000.00	10.57	37.71	11.27	37.01	11.45	36.83
8050.00	10.59	37.75	11.31	37.03	11.43	36.91
8100.00	10.64	37.75	11.36	37.03	11.44	36.95
8150.00	10.66	37.79	11.40	37.05	11.56	36.88
8200.00	10.69	37.80	11.42	37.08	11.66	36.84
8250.00	10.68	37.87	11.45	37.10	11.70	36.85
8300.00	10.70	37.90	11.44	37.16	11.66	36.94
8350.00	10.67	37.99	11.41	37.25	11.62	37.04
8400.00	10.66	38.05	11.37	37.33	11.61	37.09
8450.00	10.60	38.15	11.32	37.44	11.60	37.15
8500.00	10.59	38.21	11.26	37.54	11.54	37.27
8550.00	10.55	38.31	11.20	37.66	11.48	37.38
8600.00	10.54	38.37	11.16	37.75	11.38	37.53
8650.00	10.53	38.43	11.09	37.87	11.28	37.68
8700.00	10.53	38.48	11.05	37.96	11.25	37.76
8750.00	10.58	38.48	11.03	38.03	11.24	37.82
8800.00	10.62	38.49	11.03	38.08	11.26	37.85

Frequency	Gain(Isotr.) 1 m Ap.	Ant.-Factor 1 m Ap.	Gain(Isotr.) 3 m Ap.	Ant.-Factor 3 m Ap.	Gain(Isotr.) farfield	Ant.-Factor farfield
MHz	dBi	dB/m	dBi	dB/m	dBi	dB/m
8850.00	10.66	38.50	11.04	38.12	11.28	37.88
8900.00	10.70	38.51	11.08	38.13	11.23	37.98
8950.00	10.73	38.52	11.07	38.19	11.21	38.04
9000.00	10.75	38.55	11.11	38.20	11.31	37.99
9050.00	10.77	38.58	11.11	38.25	11.37	37.98
9100.00	10.79	38.61	11.13	38.27	11.38	38.02
9150.00	10.79	38.65	11.13	38.32	11.34	38.11
9200.00	10.81	38.68	11.16	38.34	11.28	38.22
9250.00	10.80	38.74	11.17	38.37	11.29	38.25
9300.00	10.80	38.79	11.16	38.43	11.33	38.26
9350.00	10.83	38.81	11.16	38.48	11.30	38.34
9400.00	10.86	38.82	11.19	38.49	11.28	38.41
9450.00	10.90	38.82	11.22	38.51	11.29	38.44
9500.00	10.98	38.79	11.28	38.50	11.35	38.42
9550.00	11.04	38.78	11.35	38.47	11.43	38.39
9600.00	11.15	38.72	11.43	38.44	11.53	38.34
9650.00	11.25	38.66	11.56	38.35	11.64	38.27
9700.00	11.33	38.63	11.68	38.28	11.73	38.23
9750.00	11.36	38.64	11.77	38.23	11.78	38.22
9800.00	11.38	38.66	11.82	38.22	11.84	38.20
9850.00	11.39	38.70	11.86	38.22	11.95	38.13
9900.00	11.35	38.78	11.81	38.32	12.04	38.09
9950.00	11.33	38.85	11.78	38.40	12.04	38.13
10000.00	11.28	38.94	11.73	38.49	11.99	38.23
10050.00	11.27	39.00	11.69	38.58	11.95	38.31
10100.00	11.28	39.02	11.62	38.68	11.94	38.36
10150.00	11.30	39.05	11.59	38.76	11.92	38.43
10200.00	11.33	39.06	11.58	38.81	11.82	38.57
10250.00	11.41	39.03	11.66	38.78	11.80	38.64
10300.00	11.45	39.03	11.65	38.83	11.79	38.69
10350.00	11.52	39.00	11.69	38.83	11.78	38.74
10400.00	11.52	39.04	11.70	38.86	11.82	38.74
10450.00	11.54	39.07	11.75	38.85	11.83	38.77
10500.00	11.53	39.12	11.75	38.90	11.85	38.79
10550.00	11.51	39.17	11.73	38.96	11.84	38.85
10600.00	11.48	39.25	11.67	39.06	11.75	38.98
10650.00	11.47	39.30	11.68	39.09	11.74	39.03
10700.00	11.47	39.34	11.64	39.17	11.78	39.03
10750.00	11.51	39.34	11.66	39.19	11.84	39.00
10800.00	11.56	39.33	11.67	39.22	11.85	39.04
10850.00	11.61	39.32	11.75	39.18	11.85	39.08
10900.00	11.66	39.31	11.82	39.15	11.90	39.07
10950.00	11.71	39.30	11.91	39.10	12.06	38.95
11000.00	11.74	39.31	11.97	39.07	12.15	38.90
11050.00	11.73	39.36	12.05	39.04	12.24	38.85
11100.00	11.73	39.40	12.08	39.05	12.26	38.87
11150.00	11.69	39.47	12.12	39.05	12.26	38.91
11200.00	11.67	39.53	12.10	39.11	12.26	38.95
11250.00	11.64	39.60	12.14	39.10	12.31	38.93
11300.00	11.63	39.65	12.15	39.13	12.30	38.99
11350.00	11.66	39.66	12.19	39.13	12.30	39.02
11400.00	11.71	39.65	12.25	39.11	12.28	39.07
11450.00	11.79	39.61	12.33	39.07	12.32	39.07
11500.00	11.86	39.57	12.41	39.02	12.47	38.96



Frequency	Gain(Isotr.) 1 m Ap.	Ant.-Factor 1 m Ap.	Gain(Isotr.) 3 m Ap.	Ant.-Factor 3 m Ap.	Gain(Isotr.) farfield	Ant.-Factor farfield
MHz	dBi	dB/m	dBi	dB/m	dBi	dB/m
11550.00	11.97	39.50	12.55	38.92	12.65	38.82
11600.00	12.04	39.47	12.62	38.89	12.77	38.74
11650.00	12.12	39.42	12.72	38.83	12.85	38.69
11700.00	12.16	39.43	12.81	38.77	12.92	38.66
11750.00	12.19	39.43	12.87	38.75	12.99	38.63
11800.00	12.17	39.49	12.91	38.75	13.08	38.58
11850.00	12.16	39.53	12.92	38.77	13.09	38.60
11900.00	12.14	39.60	12.91	38.82	13.07	38.67
11950.00	12.10	39.66	12.86	38.91	13.05	38.72
12000.00	12.09	39.72	12.83	38.97	12.97	38.84
12050.00	12.07	39.77	12.80	39.04	12.96	38.88
12100.00	12.09	39.79	12.77	39.10	12.94	38.93
12150.00	12.11	39.80	12.79	39.12	12.93	38.99
12200.00	12.15	39.80	12.82	39.13	12.93	39.01
12250.00	12.20	39.79	12.85	39.13	12.97	39.02
12300.00	12.25	39.77	12.94	39.08	13.00	39.02
12350.00	12.29	39.76	12.99	39.06	13.12	38.93
12400.00	12.31	39.78	13.02	39.07	13.17	38.92
12450.00	12.32	39.81	13.04	39.08	13.20	38.92
12500.00	12.28	39.88	13.04	39.12	13.21	38.95
12550.00	12.26	39.93	13.00	39.19	13.15	39.04
12600.00	12.17	40.06	12.95	39.28	13.12	39.11
12650.00	12.14	40.12	12.89	39.37	13.08	39.18
12700.00	12.06	40.24	12.82	39.48	13.00	39.30
12750.00	12.05	40.28	12.76	39.57	12.94	39.39
12800.00	12.02	40.34	12.74	39.63	12.89	39.47
12850.00	12.05	40.35	12.68	39.72	12.83	39.57
12900.00	12.09	40.34	12.66	39.77	12.83	39.60
12950.00	12.15	40.31	12.66	39.81	12.81	39.65
13000.00	12.23	40.26	12.66	39.83	12.80	39.70
13050.00	12.28	40.25	12.72	39.81	12.83	39.71
13100.00	12.36	40.21	12.75	39.82	12.83	39.73
13150.00	12.35	40.25	12.72	39.88	12.81	39.79
13200.00	12.41	40.22	12.71	39.92	12.80	39.83
13250.00	12.37	40.29	12.69	39.98	12.80	39.87
13300.00	12.42	40.28	12.69	40.01	12.77	39.93
13350.00	12.39	40.34	12.65	40.08	12.74	39.99
13400.00	12.47	40.29	12.58	40.18	12.66	40.10
13450.00	12.49	40.31	12.57	40.22	12.66	40.13
13500.00	12.63	40.19	12.60	40.22	12.74	40.09
13550.00	12.72	40.14	12.67	40.19	12.83	40.03
13600.00	12.85	40.04	12.74	40.15	12.90	39.99
13650.00	12.98	39.94	12.83	40.09	13.01	39.92
13700.00	13.07	39.89	12.91	40.04	13.05	39.90
13750.00	13.18	39.81	13.02	39.97	13.19	39.80
13800.00	13.21	39.81	13.06	39.96	13.22	39.79
13850.00	13.27	39.78	13.08	39.97	13.21	39.84
13900.00	13.26	39.82	13.09	39.99	13.19	39.89
13950.00	13.31	39.81	13.08	40.03	13.14	39.98
14000.00	13.26	39.89	13.00	40.14	13.05	40.09
14050.00	13.34	39.83	12.98	40.19	13.06	40.12
14100.00	13.33	39.87	12.97	40.23	13.03	40.18
14150.00	13.43	39.80	12.99	40.24	12.99	40.25
14200.00	13.48	39.79	13.04	40.23	13.03	40.24

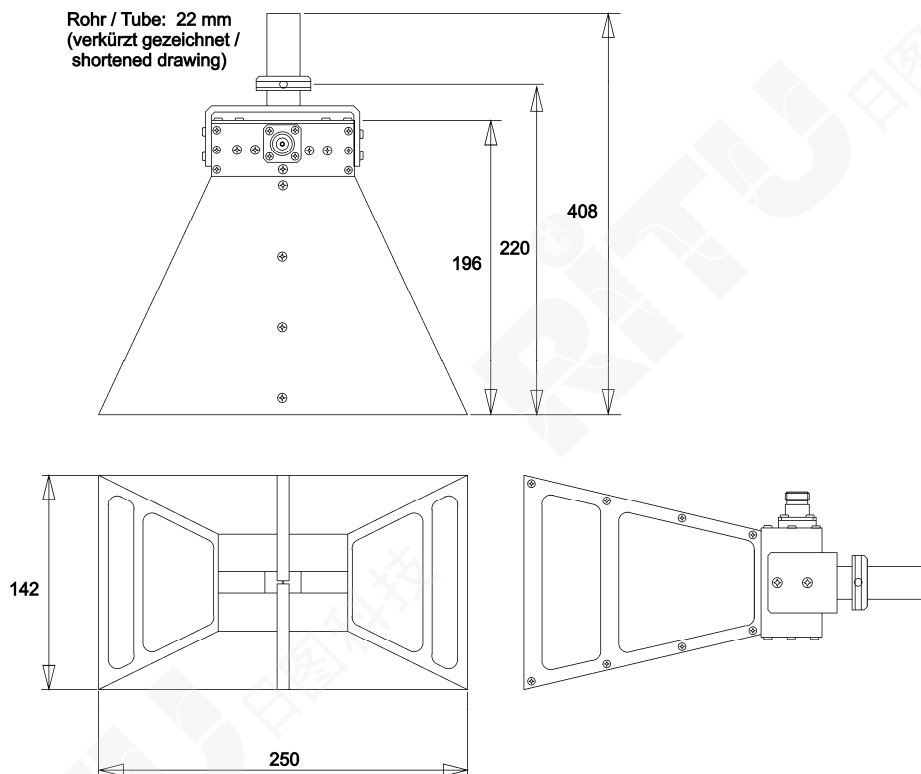
Frequency	Gain(Isotr.) 1 m Ap.	Ant.-Factor 1 m Ap.	Gain(Isotr.) 3 m Ap.	Ant.-Factor 3 m Ap.	Gain(Isotr.) farfield	Ant.-Factor farfield
MHz	dBi	dB/m	dBi	dB/m	dBi	dB/m
14250.00	13.58	39.72	13.06	40.23	13.04	40.25
14300.00	13.65	39.68	13.13	40.20	13.11	40.21
14350.00	13.76	39.59	13.22	40.13	13.22	40.14
14400.00	13.81	39.57	13.31	40.08	13.24	40.15
14450.00	13.92	39.50	13.37	40.05	13.31	40.11
14500.00	13.99	39.45	13.43	40.02	13.39	40.06
14550.00	14.08	39.40	13.48	39.99	13.42	40.06
14600.00	14.19	39.31	13.56	39.94	13.51	40.00
14650.00	14.29	39.25	13.63	39.90	13.57	39.97
14700.00	14.42	39.14	13.75	39.81	13.64	39.92
14750.00	14.53	39.07	13.86	39.74	13.76	39.84
14800.00	14.67	38.96	13.97	39.66	13.79	39.83
14850.00	14.75	38.90	14.11	39.55	13.91	39.75
14900.00	14.88	38.81	14.25	39.44	14.03	39.65
14950.00	14.93	38.79	14.38	39.33	14.11	39.60
15000.00	15.02	38.72	14.52	39.22	14.22	39.52
15050.00	15.04	38.73	14.60	39.17	14.28	39.49
15100.00	15.11	38.69	14.71	39.09	14.37	39.43
15150.00	15.12	38.71	14.82	39.01	14.50	39.33
15200.00	15.17	38.69	14.90	38.95	14.60	39.26
15250.00	15.20	38.69	14.98	38.91	14.66	39.23
15300.00	15.25	38.66	15.08	38.83	14.77	39.15
15350.00	15.29	38.65	15.16	38.79	14.86	39.08
15400.00	15.34	38.63	15.26	38.71	15.01	38.96
15450.00	15.39	38.61	15.35	38.65	15.12	38.88
15500.00	15.42	38.61	15.44	38.58	15.22	38.80
15550.00	15.47	38.59	15.54	38.51	15.34	38.72
15600.00	15.45	38.63	15.64	38.44	15.47	38.61
15650.00	15.50	38.61	15.73	38.38	15.61	38.50
15700.00	15.47	38.67	15.81	38.32	15.73	38.41
15750.00	15.52	38.64	15.91	38.26	15.85	38.32
15800.00	15.50	38.69	15.99	38.20	15.99	38.20
15850.00	15.57	38.65	16.09	38.13	16.12	38.10
15900.00	15.58	38.67	16.21	38.04	16.25	37.99
15950.00	15.66	38.62	16.32	37.95	16.40	37.88
16000.00	15.68	38.62	16.44	37.86	16.50	37.80
16050.00	15.75	38.58	16.55	37.78	16.62	37.71
16100.00	15.78	38.58	16.65	37.70	16.73	37.62
16150.00	15.81	38.57	16.74	37.65	16.81	37.58
16200.00	15.82	38.59	16.79	37.62	16.88	37.53
16250.00	15.81	38.63	16.83	37.61	16.94	37.50
16300.00	15.81	38.66	16.85	37.62	16.96	37.50
16350.00	15.76	38.73	16.84	37.65	16.99	37.50
16400.00	15.74	38.78	16.79	37.72	16.97	37.55
16450.00	15.63	38.91	16.73	37.81	16.91	37.63
16500.00	15.60	38.97	16.65	37.92	16.87	37.69
16550.00	15.50	39.09	16.59	38.01	16.82	37.78
16600.00	15.48	39.15	16.49	38.13	16.74	37.88
16650.00	15.37	39.28	16.43	38.22	16.71	37.94
16700.00	15.36	39.31	16.38	38.30	16.65	38.02
16750.00	15.27	39.43	16.35	38.36	16.58	38.12
16800.00	15.30	39.43	16.33	38.39	16.57	38.16
16850.00	15.24	39.52	16.33	38.42	16.57	38.18
16900.00	15.24	39.54	16.34	38.44	16.53	38.25



Frequency	Gain(Isotr.) 1 m Ap.	Ant.-Factor 1 m Ap.	Gain(Isotr.) 3 m Ap.	Ant.-Factor 3 m Ap.	Gain(Isotr.) farfield	Ant.-Factor farfield
MHz	dBi	dB/m	dBi	dB/m	dBi	dB/m
16950.00	15.17	39.63	16.34	38.47	16.56	38.25
17000.00	15.17	39.66	16.33	38.50	16.53	38.30
17050.00	15.11	39.74	16.33	38.53	16.53	38.33
17100.00	15.09	39.79	16.33	38.55	16.57	38.31
17150.00	15.02	39.88	16.32	38.58	16.57	38.33
17200.00	14.97	39.96	16.32	38.61	16.55	38.38
17250.00	14.89	40.07	16.29	38.67	16.57	38.38
17300.00	14.79	40.19	16.26	38.72	16.54	38.44
17350.00	14.67	40.33	16.23	38.77	16.52	38.49
17400.00	14.51	40.53	16.17	38.86	16.47	38.56
17450.00	14.33	40.73	16.07	38.98	16.42	38.64
17500.00	14.11	40.97	15.96	39.12	16.32	38.76
17550.00	13.88	41.23	15.79	39.31	16.21	38.90
17600.00	13.59	41.54	15.60	39.53	16.02	39.11
17650.00	13.33	41.83	15.36	39.80	15.81	39.34
17700.00	13.01	42.16	15.08	40.10	15.57	39.61
17750.00	12.73	42.47	14.74	40.47	15.28	39.93
17800.00	12.40	42.83	14.41	40.82	14.96	40.27
17850.00	12.10	43.16	14.05	41.21	14.63	40.62
17900.00	11.78	43.49	13.71	41.57	14.28	41.00
17950.00	11.52	43.78	13.36	41.94	13.99	41.31
18000.00	11.27	44.05	13.08	42.25	13.75	41.57

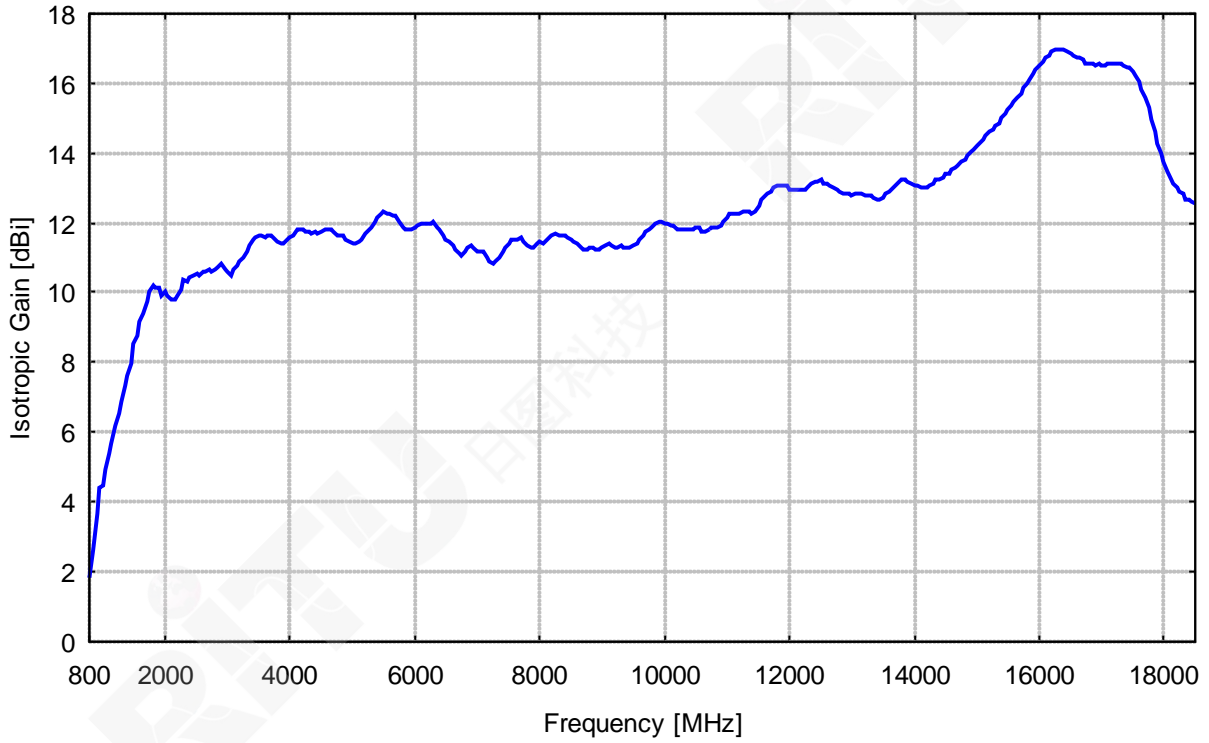
Kalibrierbezugspunkt:  
Apertur

Calibration Reference Point:  
Aperture

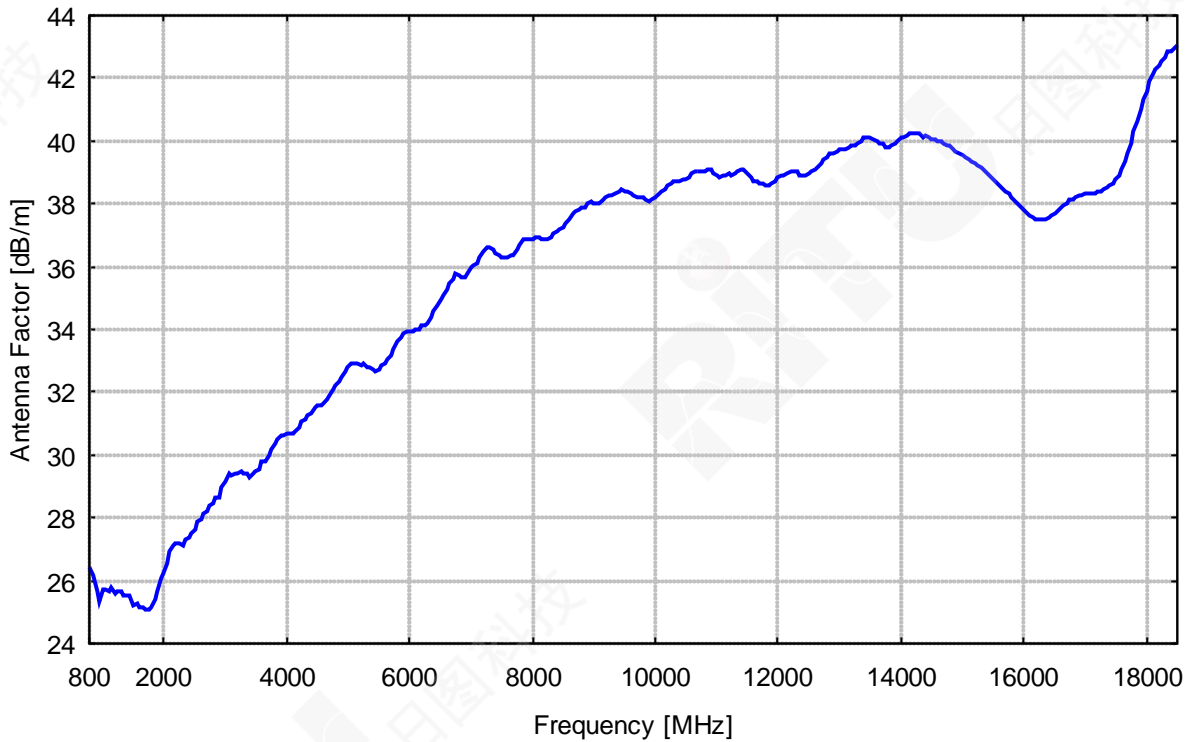




Isotropgewinn

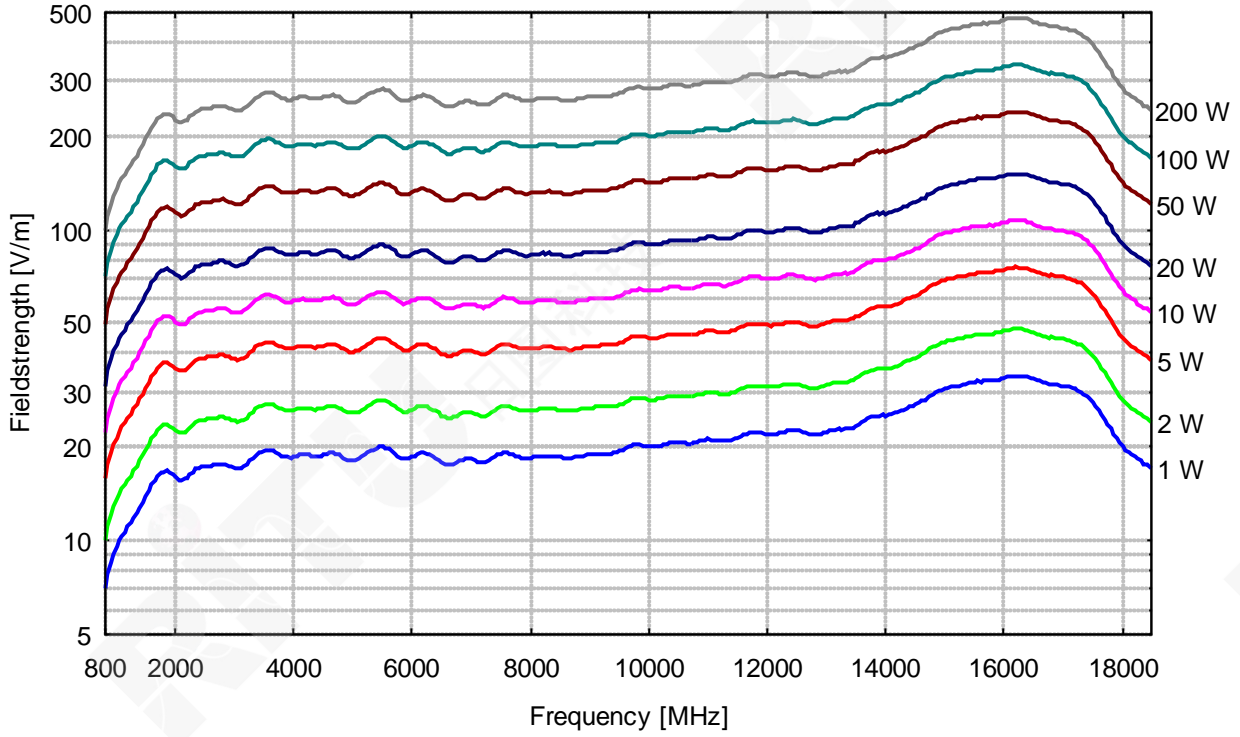


Antennen-Wandlungsmaß

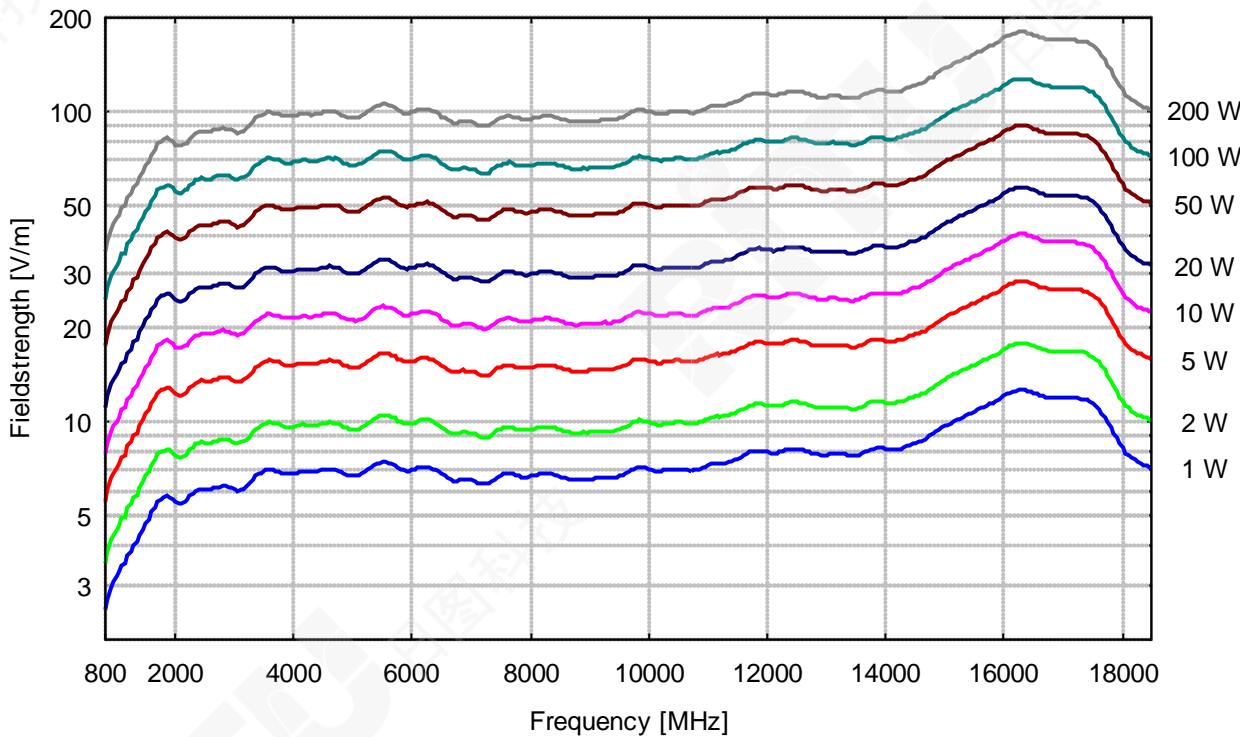




BBHA 9120 D Input Power, Dist. Aperture-EuT: 1 m

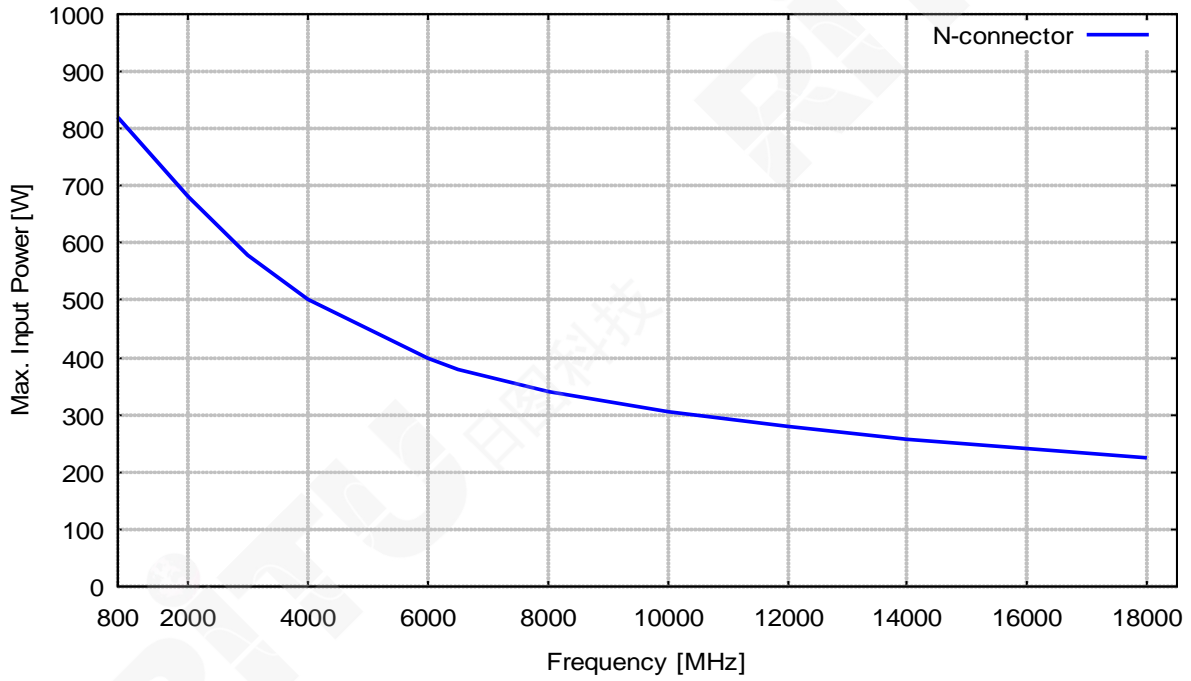


BBHA 9120 D Input Power, Dist. Aperture-EuT: 3 m

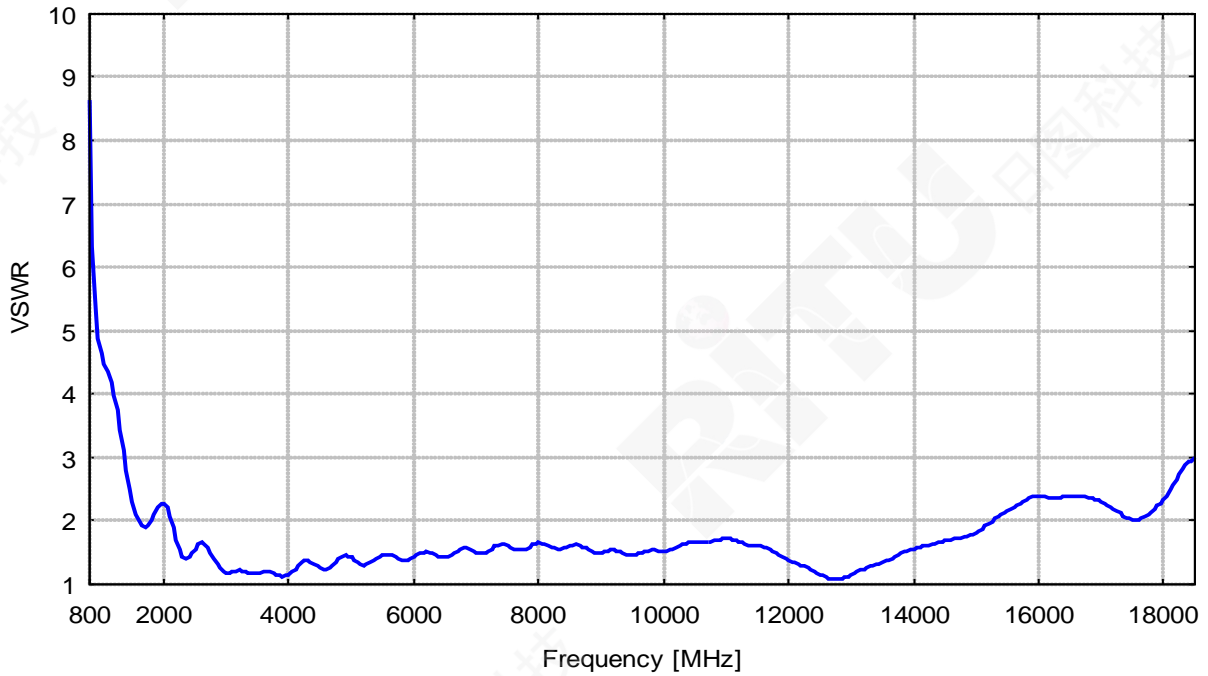




Maximale Eingangsleistung



VSWR



# 日图简介

深圳市日图科技有限公司（简称“日图科技”）创立于2004年，核心业务是为国内企业提供测试设备及相关器材的供应服务，公司客户涵盖制造、科研、教育、电力、能源、通信等众多领域。创业至今，日图科技已经成为国内仪器仪表行业中最大的综合服务供应商之一，日图科技作为行内的领先者，有着高效的供应服务体系，并拥有一支专业的、高素质的服务团队。

目前，日图科技已在深圳、上海、广州、苏州、重庆、杭州、西安、香港等国内电子工业发达地区设立了办事与服务机构，并通过日图科技在全国各地的经销网络，为广大客户提供优质的本地化服务。

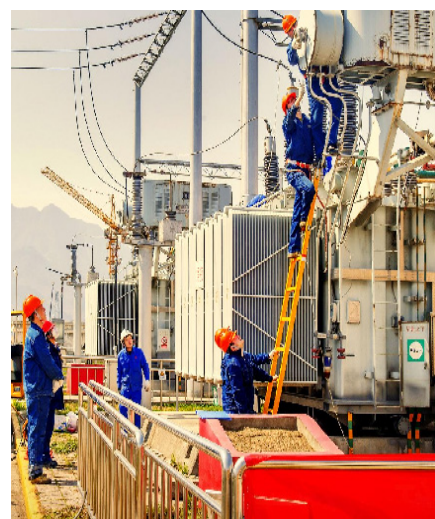
日图科技一贯秉承“专业、规范、诚信立业，日日图新”的宗旨，并在实践中不断提升公司的服务能力，为客户提供专业、高效、全面、经济的优质供应服务，顾客满意是日图科技永远追求的目标。

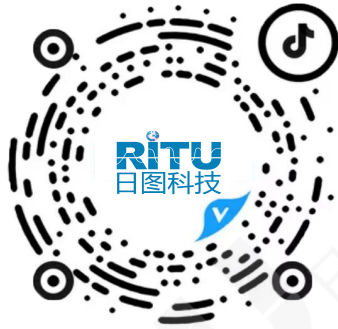
# 合作伙伴



# 优势服务

- (1) 产品选型
- (2) 测试解决方案
- (3) 免费测试服务
- (4) 代办计量校准
- (5) 维修维护
- (6) 技术培训
- (7) 物流配送
- (8) 常备应急库存





日图抖音号



日图公众号

### 深圳总部

深圳市南山区留仙大道南山云谷创新产业园二期 6 栋一楼东座  
电话：0755-83680722(8 线)

### 上海分公司

上海市闵行区中春路 8633 弄万科七宝国际 26 幢 701 室  
电话：021-33888891/3/5  
手机：13564654980

### 广州分公司

广州市科学城科学大道中 97 号科汇金谷 J 栋东座 808 室  
电话：020-31604020  
手机：18027340836

### 西安分公司

陕西省西安市雁塔区长安中路南飞鸿广场 3 号楼 1813 室  
手机：15529365365

### 杭州分公司

浙江省杭州市萧山区盈丰街道鸿宁路 1819 号左右世界 1 幢 1 单元 702-3  
电话：0571-86856181  
手机：18668225058

### 重庆分公司

重庆市观音桥茂业东方时代大厦 35 楼 3509 室  
电话：023-67904187  
手机：13896060852

### 苏州分公司

苏州苏州工业园区科营路 2 号中新生态大厦 10 楼 1010 室  
电话：0512-62515781、0512-62515784  
手机：15895400640

### 香港分公司

香港新界元朗屏厦厦村厦村路 DD125 段 1215-1217lot  
电话：+852-24932683

## 深圳市日图科技有限公司

SHENZHEN RITU SCIENCE TECHNOLOGY CO.,LTD

www.rituchina.com

400-616-5217

广东省深圳市南山区留仙大道南山云谷创新产业园二期 6 栋一楼东座

① 如需所有最新配套资料，请立即与日图科技各地分公司联系。